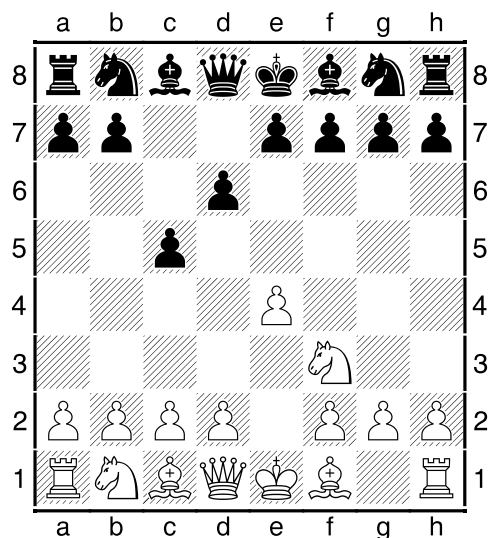


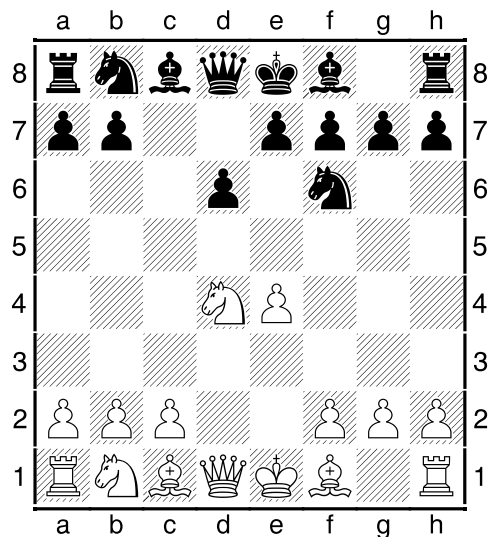
(2) Wining the queen–Sicilian [B57]

18.09.2020

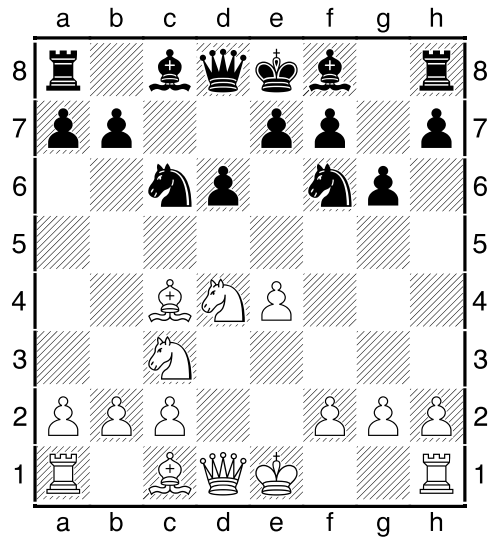
1.e4 c5 2.Nf3 [2.d4 cxd4 3.c3 The Smith–Morra Gambit - White sacrifices a pawn for active piece play and the open c–file 3...dxc3 4.Nxc3 Sicilian Dragon Players have to pay attention as they can't go for their usual move order. 4...d6 5.Nf3 Nf6 6.Bc4 g6 Black aims for his typical setup in the Sicilian Dragon Variation 7.e5 Black is already a lot worse. As we've seen before, Black can't take on e5 with his d–pawn in view of Bxf7, winning the queen!]



2...d6 3.d4 cxd4 4.Nxd4 Nf6 5.Nc3 g6 [5...e6]

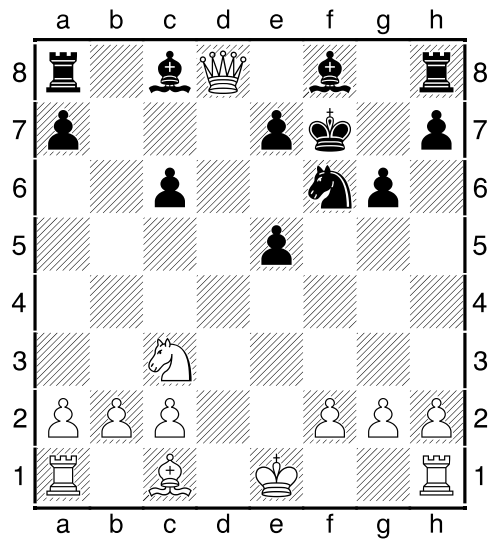


6.Bc4 Nc6 [Bg7..it's better to develop the king side first]



7.Nxc6 bxc6 8.e5 [Black has to be careful. If he takes the pawn on e5, he will lose on the spot]

8...dxe5 9.Bxf7+ Kxf7 10.Qxd8



Line